

# FUTURE LAND USE MAP



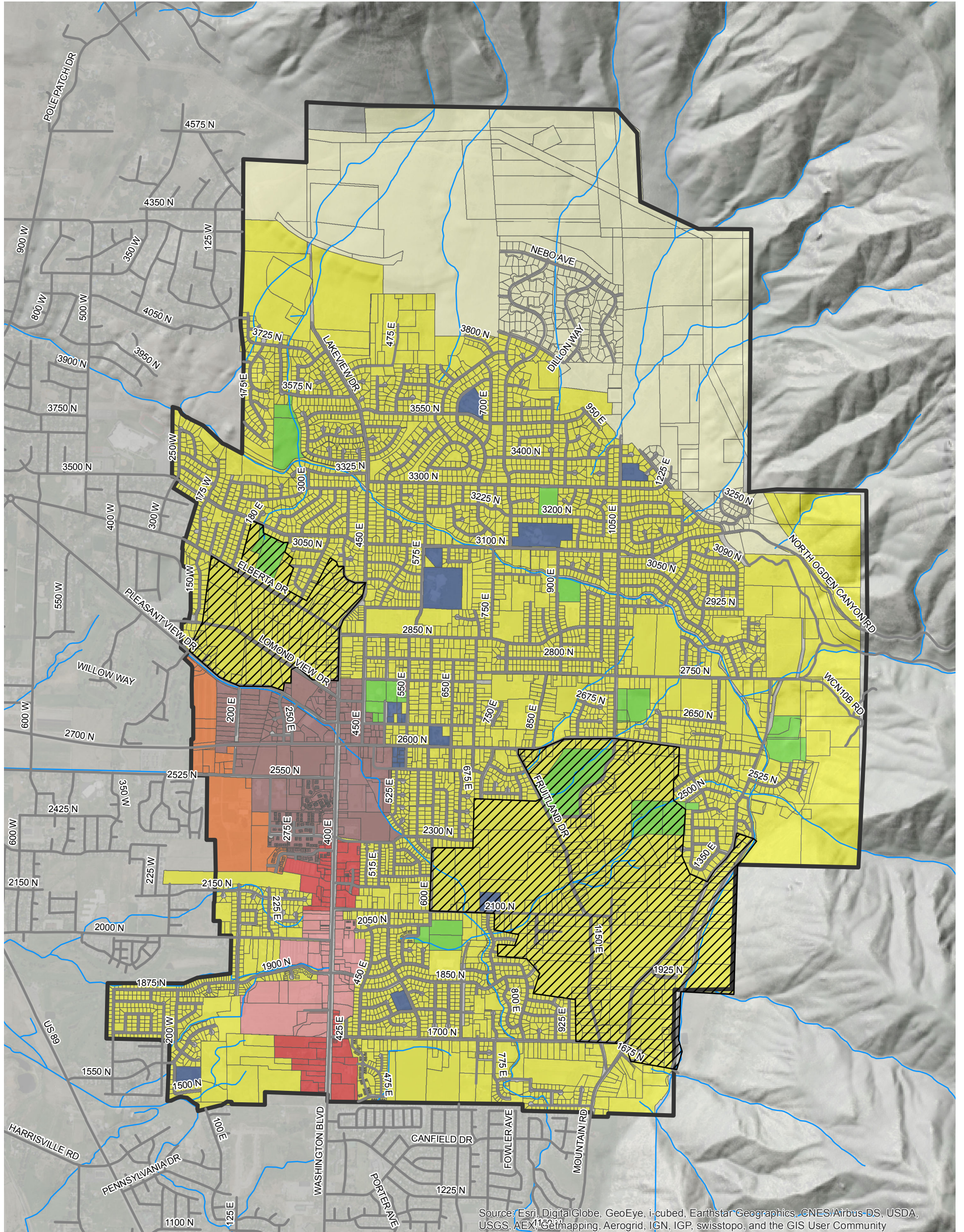
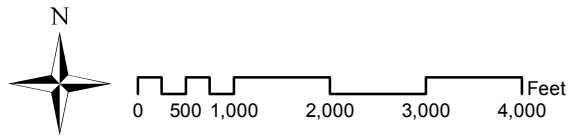
## NORTH OGDEN CITY

— SETTLED 1851 —

### GENERAL PLAN UPDATE

Date: 9/30/2015

- |                        |                                |  |  |
|------------------------|--------------------------------|--|--|
|                        | Potential Conservation Areas   |  | Residential Medium Density               |
|                        | Streets                        |  | Parks                                    |
|                        | North Ogden Potential Boundary |  | Down Town Mixed Use - See Downtown Map   |
|                        | Streams/Canals                 |  | South Town Mixed Use - See Southtown Map |
| <b>Future Land Use</b> |                                |  | Mixed-Use/Multi-family/Commercial        |
|                        | Residential Hillside           |  | Civic/Institutional                      |
|                        | Residential Low Density        |  |  |



Source: Esri, DigitalGlobe, GeoEye, i-cubed, Earthstar Geographics, CNES/Airbus-DS, USDA, USGS, AEX, Getmapping, Aerogrid, IGN, IGP, swisstopo, and the GIS User Community