

North Ogden Public Safety Building Needs Assessment

Final Report – May 2020



ARCHITECTS

Table of Contents



ACKNOWLEDGMENTS



STUDY SUMMARY



AREA SUMMARY



CONCEPTUAL SITE
PLAN



PROJECT BUDGET



APPENDIX A -
EXISTING FACILITY
SUMMARY



APPENDIX B-
ALTERNATE SITE
STUDIES

Acknowledgements

North Ogden City Staff

Neil Berube
Mayor

John Call
City Manager/Attorney

Dirk Quinney
Police Chief

Patrick E. Lambert
Justice Court Judge

Annette Spendlove
City Recorder

Jeremy Hinds
Lieutenant, Police Department

Design Team

Jim Child, AIA, LEED AP
Architect/Principal In Charge

Scott Holmes, AAIA
Project Manager

Building Committee

Dirk Quinney

Clark Crowther

Phil Swanson

Laura Barker

Karen McIntosh

Robert Bolar

Tim Scott

Jay Johnson

Chad Roylance

Gary Stoker

Kevin Burns



Study Summary

Existing Concerns

Public Safety Building

- Lack of ballistic security at Records and Clerks Service Counter.
- The close adjacency for the Police Records Service Window and the Courts Service Window is a problem for public perception.
- Conflicting circulation paths between victim/witness clients, detainees, staff, and secure operations creates a safety issue.
- Lack of views to the outside and a high number of interior offices creates a poor working environment.
- Undersized and combined front office workspace for Police and Court Clerks, Code Enforcement, and Animal Control create a difficult work environment.
- The current patrol and staff parking area is not secured
- Additional enclosed storage space is needed for Bulk Evidence, ATV Storage, Bicycle Storage, and a Vehicle Exam Bay.

Evaluations

Existing Facilities

- Past life expectancy and operationally insufficient
- Out of compliance with building codes and accessibility requirements
- Dated building infrastructure (HVAC, Electrical, Plumbing, Energy Consumption)
- Public, Staff and Detainee Safety issues
- Justice Court compliance with State Judicial requirements

Site Opportunities

- Existing PW site area would be adequate
- Existing PW site would experience access issues to nearby arterial roadways with planned dead end
- Separation of Public Safety and Public Works limits site opportunities
- Current campus location is known to the public
- Current campus location maintains continuity with public interface
- Preferred, and recommended, location within existing campus

The Process

Project Goals

- Reinforcing the Daily Activities of Each Officer
- Convey a Positive Public Image
- Provide Clear Separation of Public and Secure Areas
- Support a Clear and Secure Chain of Evidence
- Help to Ensure the Safety of the Public, Staff, Officers, and Detainees
- Provide Flexibility to Accommodate Changing Services, Programs, and Technology
- Reinforce the Community's Planning Goals

Staff interviews

Site evaluations

Test fit masterplan

Project budgeting : Responsible use of tax-payer funds



Area Summary

North Ogden Justice Center

Needs Assessment Summary

ID	GROUP / SPACE	AREA NEEDED	
		TOTAL NSF	TOTAL GSF

A Departments

A100	Public	4,229	5,254
A200	Victim Advocacy	433	637
A300	Justice Court	904	1,358
A400	Police - Records/Reception	860	1,352
A500	Administration	813	1,134
A600	Investigations	836	1,238
A700	Patrol + Detainee	4,665	6,324
A800	Evidence + Animal Control	1,219	1,721
Total		13,959	19,018

B Common Spaces

B100	Building Common	2,624	3,779
B200	Building Support	745	1,035
Total		3,369	4,814

Required Building Area		17,328	23,831
-------------------------------	--	---------------	---------------

C Site Area

C100	Site Improvements		19,009
C200	Ancillary Building		2,398
	Building Footprint		23,831

Total Site Square Footage		45,238	
----------------------------------	--	---------------	--

North Ogden Justice Center

Needs Assessment

A. Public

ID	SPACE	EXISTING		STAFFING			AREA REQUIRED				
		QTY	COMBINED AREA	2019	2030	2040	SPACE TYPE	NSF/ SPACE	TOTAL NSF	AREA FACTOR	DESIGN GSF
A 100											
A101	Entry Vestibule			1	1	1		80	80	1.60	128
A102	Combined Police and Court Public Lobby			1	1	1		400	400	1.33	532
A103	Court Check-in	0		1	0	0		30	0	1.60	0
A104	Security Office - Magnitometer Storage			1	1	1		120	120	1.40	168
A105	Gender Neutral Restroom (Public)			2	3	2		56	168	1.60	269
A106	Soft Interview Room			1	3	3		120	360	1.40	504
A107	Soft Interview Room w/ Fingerprint			1	1	1		140	140	1.40	196
A108	Court Room/ Training Room			1	1	1		2400	2400	1.10	2640
A109	EOC Storage			1	1	1		80	80	1.60	128
A110	Training Storage			1	1	1		120	120	1.40	168
A111	Training Room Table/Chair Storage			1	1	1		120	120	1.40	168
A112	AV Equipment			1	1	1		25	25	1.60	40
A113	Kitchenette			1	1	1		160	160	1.40	224
A114	Custodial Closet			1	1	1		56	56	1.60	90
Total									4229		5254

Area Notes

A101	Entry Vestibule	Safe Refuge
A102	Combined Police and Court Public Lobby	Shared with Court/Council - Community Room/EOC - Medical Drop Box - Court Requires 15 - 20 Seats
A103	Court Check-in	
A104	Security Office - Magnitometer Storage	3'-6"x8' door to allow magnitometer transfer
A105	Gender Neutral Restroom (Public)	
A104	Soft Interview Room	Shared with Courts as attorney client conference & prosecutor
A105	Soft Interview Room	Include a fingerprinting cabinet - Provide access from Public and Secure sides - Room Shared with Courts
A108	Court Room/ Training Room	Subdividable
A109	EOC Storage	
A110	Training Storage	
A111	Training Room Table/Chair Storage	
A113	Kitchenette	
A114	Custodial Closet	

North Ogden Justice Center

Needs Assessment

A. Victim Advocacy

ID	SPACE	EXISTING		QUANTITY			AREA REQUIRED				
		QTY	COMBINED AREA	2019	2030	2040	SPACE TYPE	NSF/ SPACE	TOTAL NSF	AREA FACTOR	DESIGN GSF
A200											
A201	Victim Advocate			1	1	1	PO	120	120	1.40	168
A202	Soft Interview Room			1	1	1		160	160	1.40	224
A203	Part-Time Victim Advocate			1	2	2	WS	64	128	1.60	205
A204	Storage			1	1	1		25	25	1.60	40
Total									433		637

Area Notes

A201	Victim Advocate	<i>Provide controled access from Public Lobby</i>
A202	Soft Interview Room	<i>Provide soft seating options and storage for toys, etc.</i>
A203	Part-Time Victim Advocate	
A204	Storage	

North Ogden Justice Center

Needs Assessment

A. Justice Court

ID	SPACE	EXISTING		STAFFING			AREA REQUIRED				
		QTY	COMBINED AREA	2019	2030	2040	SPACE TYPE	NSF/ SPACE	TOTAL NSF	AREA FACTOR	DESIGN GSF
A300											
A301	Service Counter	1		2	2	2		60	120	1.60	192
A302	Records Clerk	1		2 PT	2	2	WS	64	128	1.60	205
A303	Records Supervisor	1		1	1	1	PO	120	120	1.40	168
A304	Judges Chambers	1		1	1	1	PO	240	240	1.33	319
A305	Judges Rest Room			1	1	1		56	56	1.60	90
A306	Active Record Storage	1		1	1	1		80	80	1.60	128
A307	Archive Records Storage	1		1	1	1		80	80	1.60	128
A308	Copy/Workroom/Mailboxes/Supply Stor.	1		1	1	1		80	80	1.60	128
A309	Jury/ Shared Conference Room				1			0	0		
Total									904		1358

Area Notes

A301	Service Counter	Walk-up Workstations
A302	Records Clerk	8x8 Workstations
A303	Records Supervisor	Direct visibility to Records Counter
A304	Judges Chambers	
A306	Active Record Storage	Compact rolling storage
A307	Archive Records Storage	
A308	Copy/Workroom/Mailboxes/Supply Stor.	
A309	Jury/ Shared Conference Room	Share with A506?

North Ogden Justice Center

Needs Assessment

A. Police - Records/Reception

ID	SPACE	EXISTING		STAFFING			AREA REQUIRED				
		QTY	COMBINED AREA	2019	2030	2040	SPACE TYPE	NSF/ SPACE	TOTAL NSF	AREA FACTOR	DESIGN GSF
A400											
A401	Service Counter	1		2	2	2		60	120	1.60	192
A402	Records Clerk	1		2	3	3	WS	64	192	1.60	307
A403	Records Supervisor	1		1	1	1	PO	120	120	1.40	168
A404	Code Enforcement Officer	1		1	1	1	WS	64	64	1.60	102
A404	Animal Control Officer	1		1	1	1	WS	64	64	1.60	102
A405	Active Record Storage	1		1	1	1		80	80	1.60	128
A406	Archive Records Storage	1		1	1	1		80	80	1.60	128
A407	Copy/Workroom/Mailboxes/Supply Stor.	1		1	1	1		80	80	1.60	128
A408	Officer Records Counter			1	1	1		60	60	1.60	96
Total									860		1352

Area Notes

A401	Service Counter	<i>Walk-up Workstations</i>
A402	Records Clerk	
A403	Records Supervisor	
A405	Active Record Storage	<i>Compact rolling storage</i>
A406	Archive Records Storage	<i>Also Video Storage</i>
A407	Copy/Workroom/Mailboxes/Supply Stor.	
A408	Officer Records Counter	

North Ogden Justice Center

Needs Assessment

A. Administration

ID	SPACE	EXISTING		STAFFING			AREA REQUIRED				
		QTY	COMBINED AREA	2019	2030	2040	SPACE TYPE	NSF/ SPACE	TOTAL NSF	AREA FACTOR	DESIGN GSF
A 500											
A501	Police Chief	1		1	1	1	PO	240	240	1.33	319
A502	Assistant Chief/Captain	1		0	1	1	PO	160	160	1.40	224
A503	Administrative Assistant	1		1	1	1	WS	64	64	1.60	102
A504	Waiting Area			1	1	1		64	64	1.60	102
A505	Administration Storage			1	1	1		25	25	1.60	40
A506	Administration Conference Room	1		1	1	1		260	260	1.33	346
Total									813		1134

Area Notes

A501	Police Chief	
A502	Assistant Chief/Captain	
A503	Administrative Assistant	
A504	Waiting Area	4 Person
A505	Administration Storage	
A506	Administration Conference Room	12 Person

North Ogden Justice Center

Needs Assessment

A. Investigations

ID	SPACE	EXISTING		STAFFING			AREA REQUIRED				
		QTY	COMBINED AREA	2019	2030	2040	SPACE TYPE	NSF/ SPACE	TOTAL NSF	AREA FACTOR	DESIGN GSF
A 600											
A601	Investigations Lieutenant	1		1	1	1	PO	160	160	1.40	224
A602	Investigations Sergeant - ICAC	0		0	1	1	PO	120	120	1.40	168
A603	Detectives	2		2	4	4	WS	64	256	1.60	410
A604	Interview Room			1	1	1		100	100	1.40	140
A605	Interview Room			1	1	1		120	120	1.40	168
A606	Investigations Storage			1	1	1		80	80	1.60	128
Total									836		1238

Area Notes

- A601 Investigations Lieutenant
- A602 Investigations Sergeant - ICAC *Future Position*
- A603 Detectives
- A604 Interview Room
- A606 Investigations Storage

North Ogden Justice Center

Needs Assessment

A. Patrol + Detainee

ID	SPACE	EXISTING		STAFFING			AREA REQUIRED				
		QTY	COMBINED AREA	2019	2030	2040	SPACE TYPE	NSF/ SPACE	TOTAL NSF	AREA FACTOR	DESIGN GSF
A700											
A701	Patrol Lieutenant	1		1	1	1	PO	160	160	1.40	224
A702	Patrol Sergeant	4		4	8	8	PO	105	840	1.60	1344
A703	Report Writing	10		10	25	25	WS	36	900	1.60	1440
A704	Patrol Storage			1	1	1		80	80	1.60	128
A705	Secure Patrol Storage			1	1	1		25	25	1.60	40
A706	Processing			1	1	1		140	140	1.40	196
A707	Custodial Closet			1	1	1		56	56	1.60	90
A708	Hard Interview Room			2	2	2		80	160	1.60	256
A709	Detainee Toilet Room			1	1	1		64	64	1.60	102
A710	Sallyport			1	1	1		2160	2160	1.10	2376
A711	Patrol Shower			1	1	1		80	80	1.60	128
Total									4665		6324

Area Notes

A701	Patrol Lieutenant	
A702	Patrol Sergeant	<i>Initially (1) per office - (2) per office at build out</i>
A703	Report Writing	
A704	Patrol Storage	
A705	Secure Patrol Storage	
A706	Processing	<i>Includes holding bench with cuff restraint, work counter, intoxilizer and hand sink</i>
A708	Hard Interview Room	
A709	Detainee Toilet Room	<i>Provide remote flush valve</i>
A710	Sallyport	<i>(2) car diagonal parking with drive through, hose bib</i>
A711	Patrol Shower	<i>Stacked Laundry</i>

North Ogden Justice Center

Needs Assessment

A. Evidence + Animal Control

ID	SPACE	EXISTING		STAFFING			AREA REQUIRED				
		QTY	COMBINED AREA	2019	2030	2040	SPACE TYPE	NSF/ SPACE	TOTAL NSF	AREA FACTOR	DESIGN GSF
A800											
A801	Officer Evidence Drop-Off			1	1	1		70	70	1.60	112
A802	Pass Through Lockers			1	1	1		16	16	1.60	26
A803	Lab			1	1	1		200	200	1.33	266
A804	General Evidence Storage			1	1	1		500	500	1.25	625
A805	Drug Storage			1	1	1		25	25	1.60	40
A806	Firearms Storage			1	1	1		25	25	1.60	40
A807	Evidence to be Destroyed Storage			1	1	1		80	80	1.60	128
A808	Evidence Processing			1	1	1		70	70	1.60	112
A809	Evidence Technician	1		1	1	1	WS	64	64	1.60	102
A810	Public Evidence Pick-up Vestibule			1	1	1		64	64	1.60	102
A811	Public Evidence Pick-up Transfer Locker			1	1	1		25	25	1.60	40
A813	Animal Control Storage			1	1	1		80	80	1.60	128
Total									1219		1721

Area Notes

A801	Officer Evidence Drop-Off	
A802	Pass Through Lockers	(1) Refrigerated Locker
A803	Lab	Drying Cabinets, vent hood
A804	General Evidence Storage	High Density Shelving with a safe
A805	Drug Storage	Segregated from A604, Secured and vented
A806	Firearms Storage	Segregated from A604, Secured and vented
A807	Evidence to be Destroyed Storage	
A808	Evidence Processing	
A809	Evidence Technician	Locate adjacent to drop off and pickup areas
A810	Public Evidence Pick-up Vestibule	Transaction window
A811	Public Evidence Pick-up Transfer Locker	Transaction Sally Port
A813	Animal Control Storage	Location? Accessible from the exterior?

North Ogden Justice Center

Needs Assessment

B. Building Common

ID	SPACE	EXISTING		STAFFING			AREA REQUIRED				
		QTY	COMBINED AREA	2019	2030	2040	SPACE TYPE	NSF/ SPACE	TOTAL NSF	AREA FACTOR	DESIGN GSF
B100											
B101	Mens Restroom (Staff)			2	2	2		64	128	1.60	205
B102	Womens Restroom (Staff)			2	2	2		56	112	1.60	179
B103	Staff Lockers			20	30	30		14	420	1.60	672
B104	Shower/Changing/Restrooms			2	2	2		120	240	1.40	336
B105	Changing/Restrooms			2	2	2		80	160	1.60	256
B106	Training/Briefing			1	1	1		420	420	1.33	559
B108	Training/Briefing AV Equipment			1	1	1		36	36	1.10	40
B110	Secure Staff Entry Vestibule			1	1	1		48	48	1.60	77
B111	Armory Storage			1	1	1		100	100	1.10	110
B112	Armory Workroom			1	1	1		80	80	1.60	128
B113	Quartermaster Storage			1	1	1		80	80	1.40	112
B114	Breakroom			1	1	1		200	200	1.33	266
B115	Fitness			1	1	1		600	600	1.25	750
B116	Fitness Rest Room			1	1	1		56	56	1.60	90
Total									2624		3779

Area Notes

B101	Mens Restroom (Staff)	<i>With urinal</i>
B102	Womens Restroom (Staff)	
B103	Staff Lockers	<i>Open Locker Area</i>
B104	Shower/Changing/Restrooms	<i>With urinal</i>
B105	Changing/Restrooms	<i>With urinal</i>
B106	Training/Briefing	<i>60 occupants with 7 sf/occupant = 420 sf, Dividable to create (2) spaces</i>
B108	Training/Briefing AV Equipment	
B110	Secure Staff Entry Vestibule	<i>6'x8' vestibule</i>
B111	Armory Storage	<i>Accessible from workroom</i>
B112	Armory Workroom	
B113	Quartermaster Storage	
B114	Breakroom	
B115	Fitness	<i>Provide separate access to allow use by other City staff</i>
B116	Fitness Rest Room	<i>Unisex</i>

North Ogden Justice Center

Needs Assessment

B. Building Support

ID	SPACE	EXISTING		STAFFING			AREA REQUIRED				
		QTY	COMBINED AREA	2019	2030	2040	SPACE TYPE	NSF/ SPACE	TOTAL NSF	AREA FACTOR	DESIGN GSF
B200											
B201	Electrical			1	1	1		120	120	1.40	168
B202	Mechanical			1	1	1		200	200	1.33	266
B203	Janitorial/Building Storage Storage			1	1	1		80	80	1.60	128
B204	Fire Riser			1	1	1		25	25	1.00	25
B205	IT Office/Workroom			1	1	1	PO	160	160	1.40	224
B206	Server & Communications			1	1	1		160	160	1.40	224
Total									745		1035

Area Notes

B201	Electrical	
B202	Mechanical	
B203	Janitorial/Building Storage Storage	
B204	Fire Riser	<i>Minimum 5x5 area, locate within mechanical room</i>
B205	IT Office/Workroom	<i>(1) Workstation + Work Area + Storage</i>
B206	Server & Communications	<i>City Server - (4) 2-post racks, 8'x20' area</i>

North Ogden Justice Center

Needs Assessment

C. Site Improvements

ID	SPACE	EXISTING		QUANTITY				AREA REQUIRED					
		QTY	COMBINED AREA	2019	#REF!	2030	2040	SPACE TYPE	NSF/ SPACE	TOTAL NSF	AREA FACTOR	DESIGN GSF	
C100													
C101	Trash Enclosure			1	1	1	1		120	120	1.70	204	
C102	Staff Parking	12		30	30	33	33		162	5346	1.70	9088	
C103	Public Parking	2		5	5	5	5		162	810	1.70	1377	
C104	Patio			1	1	1	1		350	350	1.00	350	
C105	Generator Pad				1	1	1		450	450	1.00	450	
Sub Total												11469	
		Building Footprint						26229					
C106	Landscape Allowance								15%	5655	1.00	5655	
C107	Hardscape/Site Utilities Allowance								5%	1885	1.00	1885	
Total										14616		19009	

Area Notes

C101	Trash Enclosure	
C102	Staff Parking	Secured, (5) line cars, trailer, (2) security trucks
C103	Public Parking	Accessible Stalls, final parking count requirements pending site selection
C104	Patio	
C105	Generator Pad	30'x15' pad area estimated
C106	Landscape Allowance	
C107	Hardscape/Site Utilities Allowance	

North Ogden Justice Center

Needs Assessment

C. Ancillary Building

ID	SPACE	EXISTING		QUANTITY			AREA REQUIRED				
		QTY	COMBINED AREA	2019	2030	2040	SPACE TYPE	NSF/ SPACE	TOTAL NSF	AREA FACTOR	DESIGN GSF
C200											
C201	Recovered Bicycle Storage			1	1	1		200	200	1.10	220
C202	Bulk Evidence Storage			1	1	1		400	400	1.10	440
C203	Vehicle Exam / Storage			1	1	1		500	500	1.10	550
C204	Storage Bay			1	1	1		400	400	1.10	440
C205	Patrol Bicycle Storage			1	1	1		100	100	1.10	110
C206	Motorcycle Storage			1	1	1		200	200	1.10	220
C207	UTV Storage			1	1	1		200	200	1.10	220
C208	Bike Maintenance			1	1	1		100	100	1.10	110
C209	K-9	1		1	1	1		80	80	1.10	88
Total									2180		2398

Area Notes

C201	Recovered Bicycle Storage	<i>Currently Off-Site</i>
C202	Bulk Evidence Storage	
C203	Vehicle Exam / Storage	<i>Provide vertical perimeter lighting for examination, work counter, handwash and equipment storage</i>
C204	Storage Bay	<i>Speed Trailers, Barricades, Etc.</i>
C205	Patrol Bicycle Storage	
C206	Motorcycle Storage	<i>(2) motorcycles</i>
C207	UTV Storage	
C208	Bike Maintenance	
C209	K-9	<i>Indoor and outdoor space</i>

Area Examples



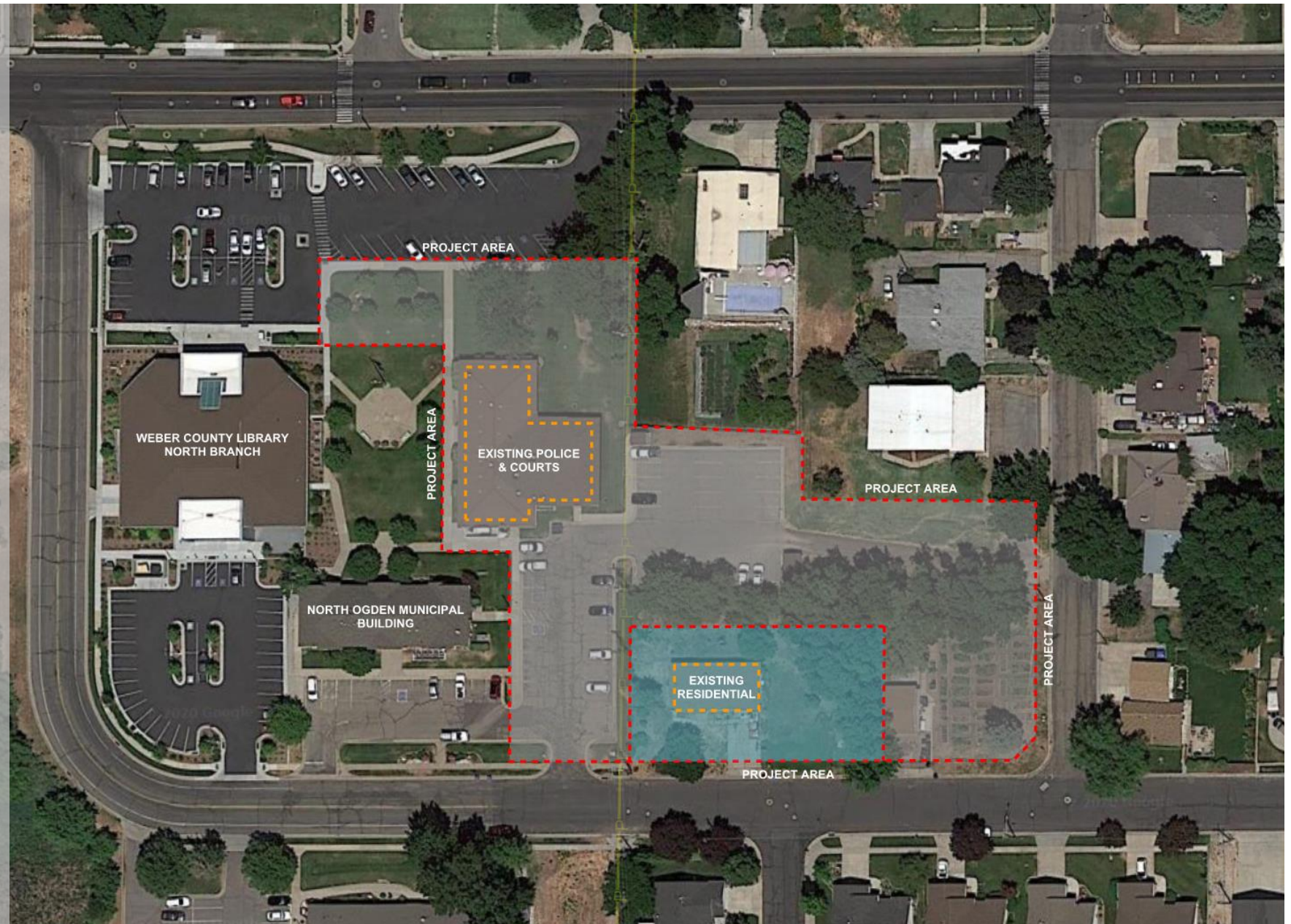
The image features a horizontal banner with a white background. The banner is divided into two sections by a diagonal white line. The left section is a dark gray trapezoid, and the right section is a dark blue trapezoid. The text "Conceptual Site Plan" is centered in the gray section in a white, sans-serif font.

Conceptual Site Plan

Property Considerations

Site Priorities

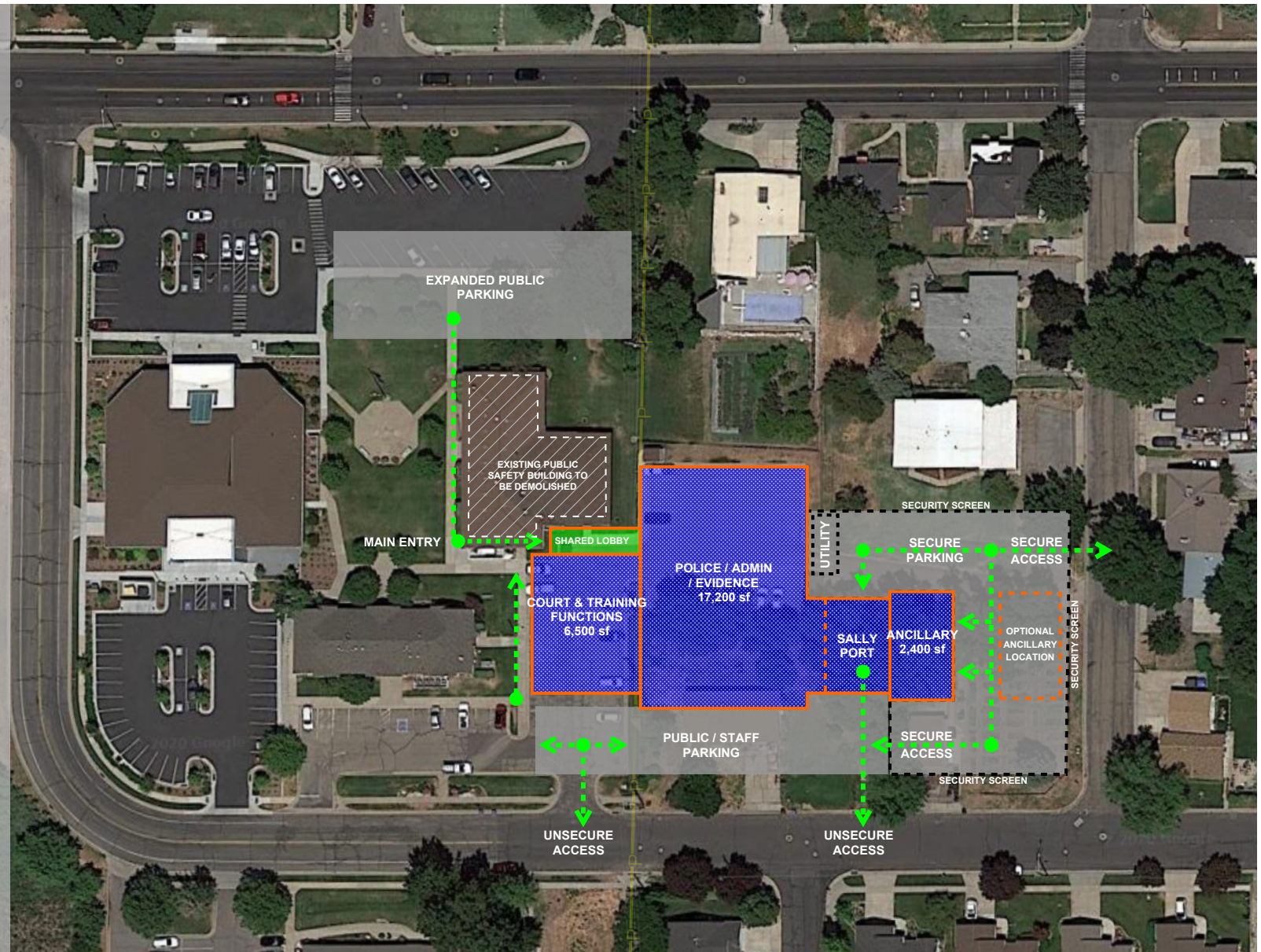
- Visible Presence
- Maintain Campus Continuity
- Access to Arterial Roadways
- Secure Access
- Secure Site
- Minimize Impact
- Acquire Adjacent Property



Conceptual Site Plan – Preferred Option E

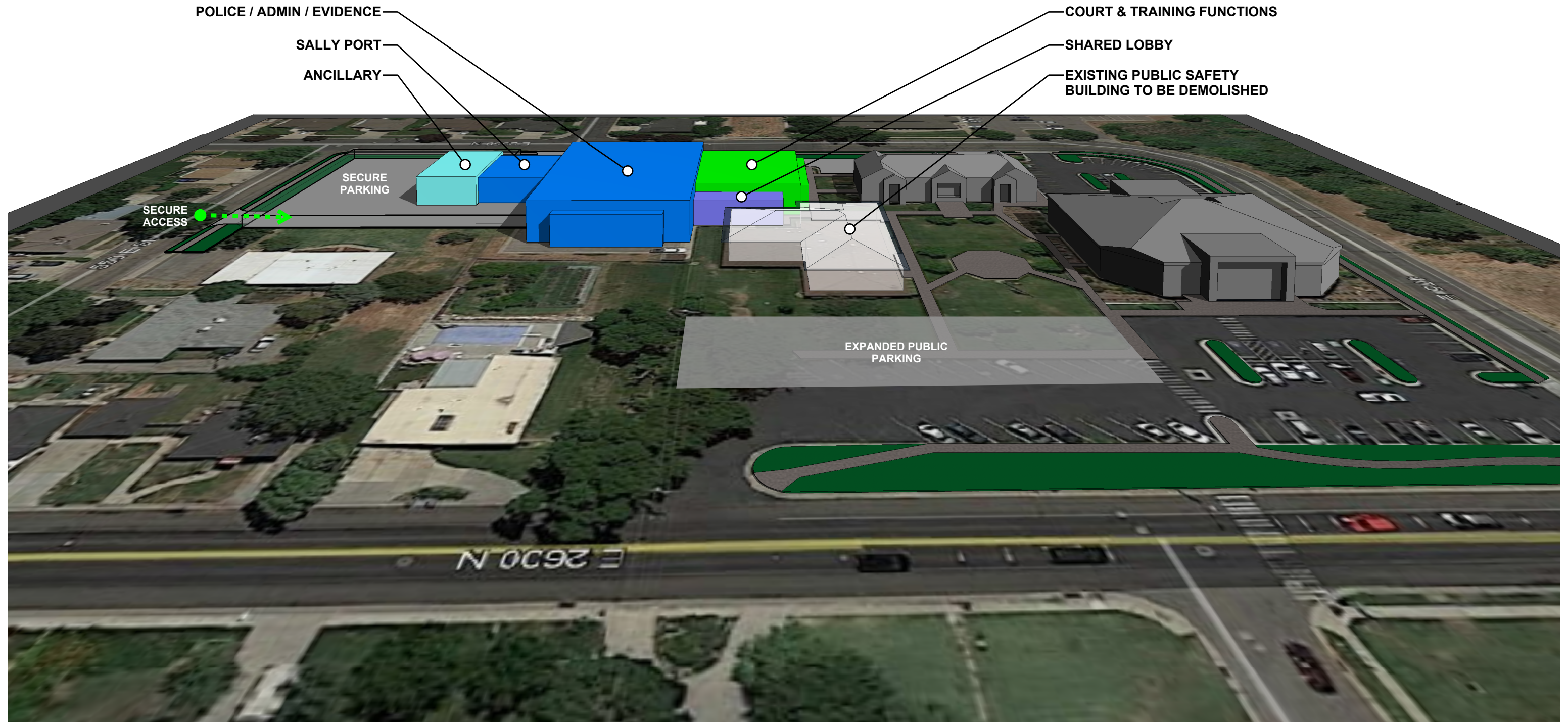
Site Characteristics

- Maintain Campus Presence
- Immediate Access to Arterial Roadways
- Secure Points of Access
- Expansion of Public Parking
- Non-Phased Approach
- Requires Adjacent South Property
- Open Space Opportunities



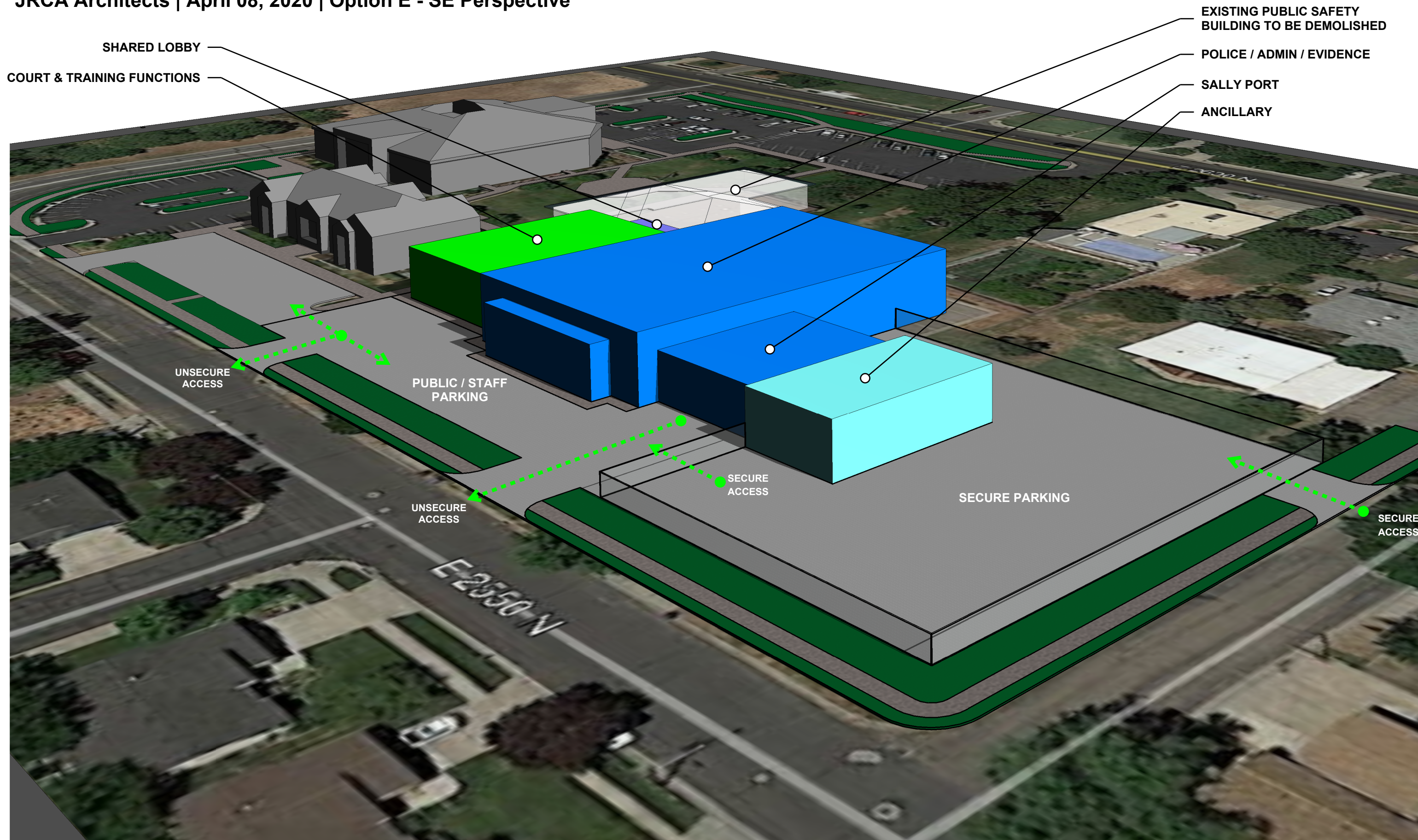
North Ogden Public Safety Building - Conceptual Massing Plan

JRCA Architects | April 08, 2020 | Option E - North Perspective



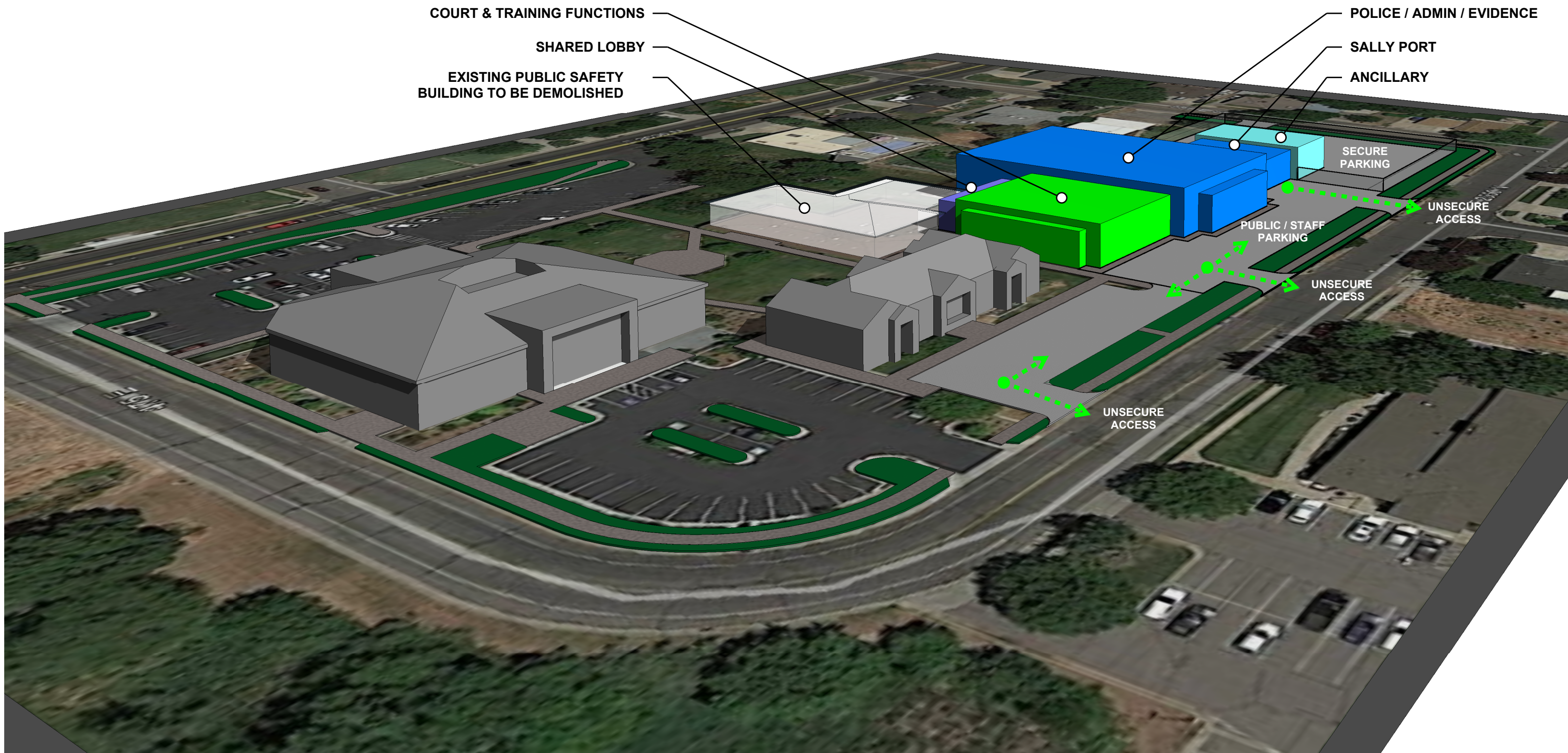
North Ogden Public Safety Building - Conceptual Massing Plan

JRCA Architects | April 08, 2020 | Option E - SE Perspective



North Ogden Public Safety Building - Conceptual Massing Plan

JRCA Architects | April 08, 2020 | Option E - SW Perspective



The slide features a dark grey background on the left and a dark blue background on the right, separated by a white diagonal line. The text "Project Budget" is centered in the grey area.

Project Budget



ARCHITECTS

North Ogden Justice Center

Preliminary / Needs Assessment - Option E

May 4, 2020




JRCA Cost Opinion

Item	Gross Area	Rate	Budget	Notes
Existing Building Demolition	5,800	\$ 1.20	\$ 6,960	Existing Public Safety Building
Site Demolition	75,300	\$ 0.90	\$ 67,770	Estimated site disturbance area
Building Area	23,831	\$ 320.00	\$ 7,625,984	
Accessory Structures/ Elements	2,400	\$ 180.00	\$ 432,000	
Site Improvements	31,460	\$ 12.00	\$ 377,520	
Div 2-16 Sub Total			\$ 8,510,234	
Inflation Factor		0.00%	\$ -	Current outlook suggest minimal escalation
GC Fees		10.00%	\$ 851,024	Includes GC Fee, Profit, Bonding & Insurance
Construction Sub Total			\$ 9,361,258	
Project Contingency		5.00%	\$ 425,512	Design and Construction Contingency
Construction Budget Total			\$ 9,786,770	Anticipated Bidding - Q4 2020
Project Soft Cost				
A and E Fees		6.00%	\$ 587,206	% of Construction Cost
FFE Budget		\$ 18.00	\$ 428,962	Allowance
FFE Design Fee		8.00%	\$ 34,317	
Audio Video Systems			\$ -	In Cost of Construction above
Information Technology			\$ 50,000	Allowance - Servers, switch gear, racks, etc.
Construction Testing & Inspection		0.35%	\$ 34,254	% of Construction Sub Total
Builders Risk Insurance		0.50%	\$ 46,806	% of Construction Sub Total
Utility Relocation			\$ -	Unknown TBD, RMP overhead line
Utility Connection Fees			\$ -	Unknown TBD
Geotechnical Evaluation			\$ 10,000	Allowance - Estimate 6 sample locations
Water Flow Analysis			\$ 2,000	Allowance
Development Impact & Permit Fees			\$ -	Unknown TBD
Land Acquisition			\$ 300,000	Anticipated market value
Existing Facility Demolition			\$ 8,030	Includes residential unit
Total Project Budget			\$ 11,288,345	

How Does North Ogden Compare?

- Pleasant Grove Justice Center (Early 2018)
 - Site and Building (25,908 sf): \$8,412,000
 - Equipment: \$465,000
 - Soft cost: \$1,694,000
 - Total: \$10,571,000

 - Tooele City Justice Center (Early 2019)
 - Site and Building (25,000 sf): \$8,500,000
 - Equipment: \$420,000
 - Soft cost: \$1,030,000
 - Total: \$9,950,000
- 

The slide features a white background with a large grey trapezoidal shape on the left and a dark blue trapezoidal shape on the right. A white diagonal line separates the two shapes. The word "Appendix" is written in white text on the grey background.

Appendix

Existing Justice Center Facilities

The North Ogden City Police Department and the City's Justice Court are current housed together in the City's Justice Center, located at 515 East 2600 North, North Ogden, Utah. This building was originally constructed in 1962 and was designed to accommodate the City Administration, Finance, Building, and Planning Departments, as well as the Police Department and Justice Court. This building was remodeled and expanded several times, the most recent being in 1998, and now includes approximately 7,250 S.F. In 2004, the City Administration, Finance, Building, and Planning Departments moved to an adjacent building and the Police and Courts operations remained.

While building has served the Police Department and Justice Court for many years, City growth, modern security concerns, mandated legal requirements, inadequate seismic design, high energy consumption, and general wear and tear have created an unsafe and inefficient environment for both the City Staff and the Citizens of North Ogden City.

Some of these physical deficiencies that will be address with the design and construction of a new facility include:

Seismic Design

The existing building was constructed in 1962, prior to the implementation of current code required seismic design requirements. It is anticipated that the building's performance in a seismic event would be very poor, creating both a safety hazard and jeopardizing continued police operations.



In addition to prescribing specific seismic design requirements, today's Building Codes also identify a Police facility as an 'essential facility' or Risk Category IV. This designation increases the structural design values by a factor of 1.5., helping to ensure both survivability and the probability of minimal structural damage in a seismic event.

Main Lobby Security and Public Accommodations



The current combined public lobby and service counters serve both the Police and Justice Court and provides the following functions:

Central point of interaction with the public

- Victims and Witnesses reporting crime
- Obtain copies of Police and Court Records
- Speak with a Law Enforcement Officer
- Speak with a Court Officer
- Pay/Resolve Fines
- Check in for Court Appearance
- Meet with legal counsel
- Sex Offender Registry Check-in
- Drop-off for discarded drugs and sharps
- Manage Concealed Carry weapon permits
- Security Screening for the Court



While a central combined main public entrance and lobby provide convenient and easy public way-finding, after initial arrival, many of these activities require separation, privacy, and security that is severely compromised by the size and configuration of the existing lobby and building. Current facilities do not provide:

- A convenient and private location to meet with and address the trauma of a victim reporting a crime.
- A visual separation between Law Enforcement and the Court,
For managing the flow of individuals after passing through security screening.
- Adequate and private space for attorney/client meetings and to separate opposing parties waiting for Court.

Interview Room



The current facility has only one interview room which is used for citizen crime reporting, victims advocate interviews, court witnesses, investigation interviews, secure detainee interview, and secure court detainee holding.

With only 1 Interview room, if there are conflicting needs, or multiple individuals must be separated during the interview process or, the Administrative Conference Room, and Staff Break Room are often utilized. This seriously compromises the safety and security for the victims, suspects, staff, public, and the integrity of the case.

Court Room Security

The State of Utah describes and mandates specific security measures for a Municipal Justice Court. The North Ogden Justice Court utilizes scheduling and bailiff security to compensate for some of the physical security requirements.

Particular concerns with the current arrangement include Judge and Clerk access to and from the Court Room. Access to the offices and clerk areas is via the left door in the attached picture, requiring the Judge and Clerk to pass through the Spectator Seating when entering or leaving the Court Room. The exterior door on the left of the picture provides a safety escape for the Judge and Clerks, however it leads directly outside to an unsecured area.



Conference/Briefing/Jury Room



The current shared conference room is used for administrative meetings, briefings, jury deliberations, investigation reviews, and as an overflow secure and nonsecure interview room.

In addition to regular scheduling conflicts, there are also security concerns with interviews and with the security and confidentiality of investigations, gathered information, and discussions that may continue for several days.

Break Room/Briefing/Court Holding Room



The existing Break Room located in the south part of the building is used for several different and sometimes conflicting functions in addition to being a break room for police and court sworn and civilian personnel. Due to scheduling conflicts and space requirements it is also sometimes used as a briefing room, interview room, and even a temporary Court detainee holding room.

While the location is convenient for the main officer South entrance, the lack of visibility, control, and security is a concern.

Evidence Drop-off, Preparation, and Storage



Maintaining and documenting a clear chain of evidence handling is critical to the success of any investigation or legal proceeding. Due to the variety and sometime hazardous nature of evidence collected storage conditions can also have an impact on the integrity of the evidence and on the health and safety of evidence technicians and others in the building.

The officer evidence drop-off area should be conveniently located and provide sufficient counter space to encourage quick processing of the evidence.

This processing space along with a secure lab area to layout, sort, and dry evidence is not available in the current facility.

The lack of separate ventilation for drug and firearm storage also creates an unhealthy condition for other building occupants.

Court Staff and Police Entry and Parking



The existing Justice Center's location adjacent to the City Hall and County Library allows for sharing of both public and staff parking. While this is convenient for citizens and City Hall use, it creates security and safety concern for the Justice Center.

Transporting of detainees to and from the Court as well in-custody individuals brought to the building by police are transferred from vehicles into the building through this same unsecured shared parking area. As this transfer time is also potentially on of the most volatile times, it is highly recommended that a secure enclosure is provided.

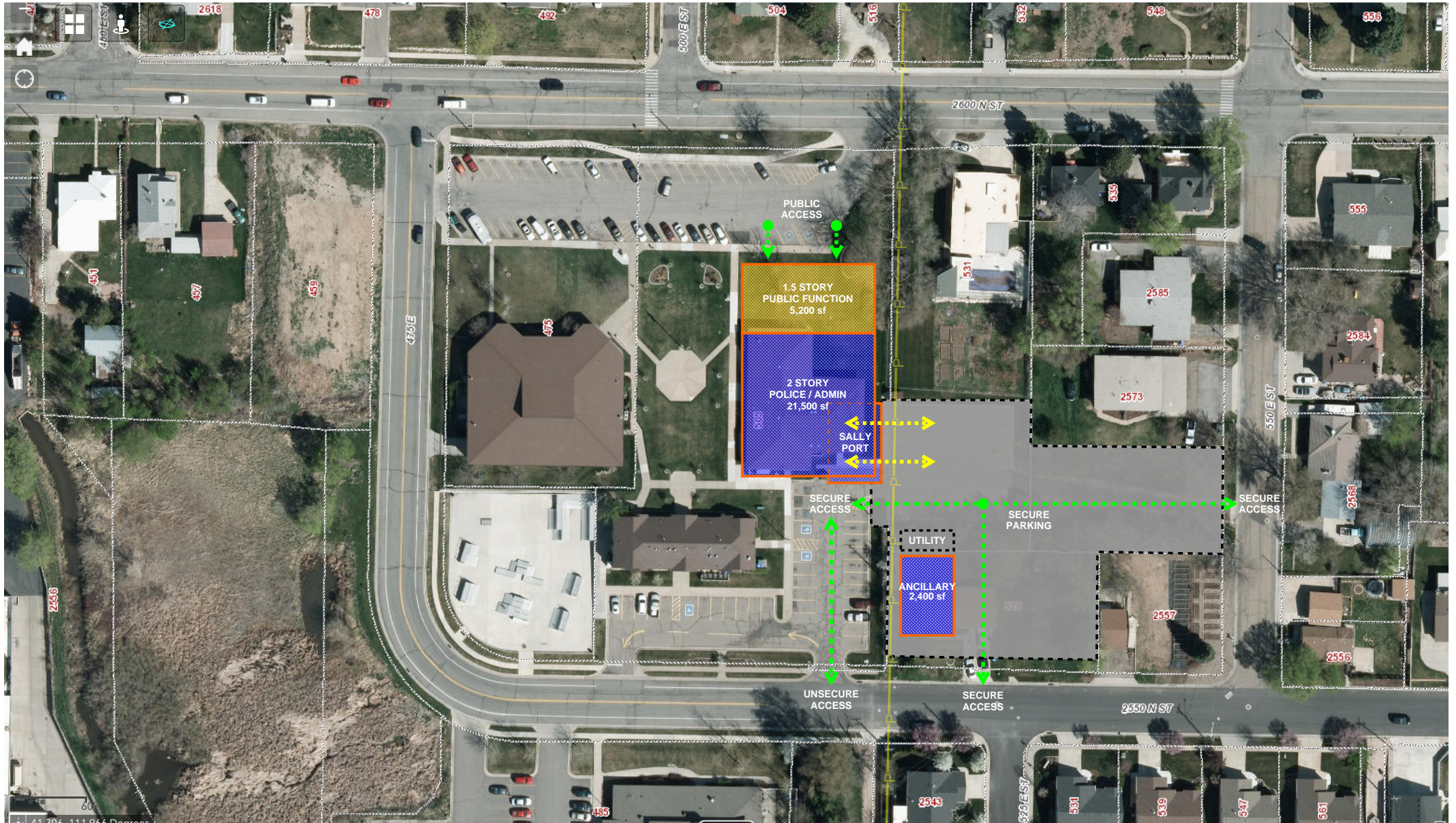
While not provided with the current facility, a secure enclosure is also strongly recommended for a safety of court personnel and law enforcement entering and exiting the building, as well as for their vehicles. Retaliation for previous and upcoming court or law enforcement action is risk. Protection of stored law enforcement vehicles and equipment to prevent vandalism and damage should also be provided.

North Ogden Public Safety Building - Site Option A

JRCA Architects | March 5, 2020



ARCHITECTS



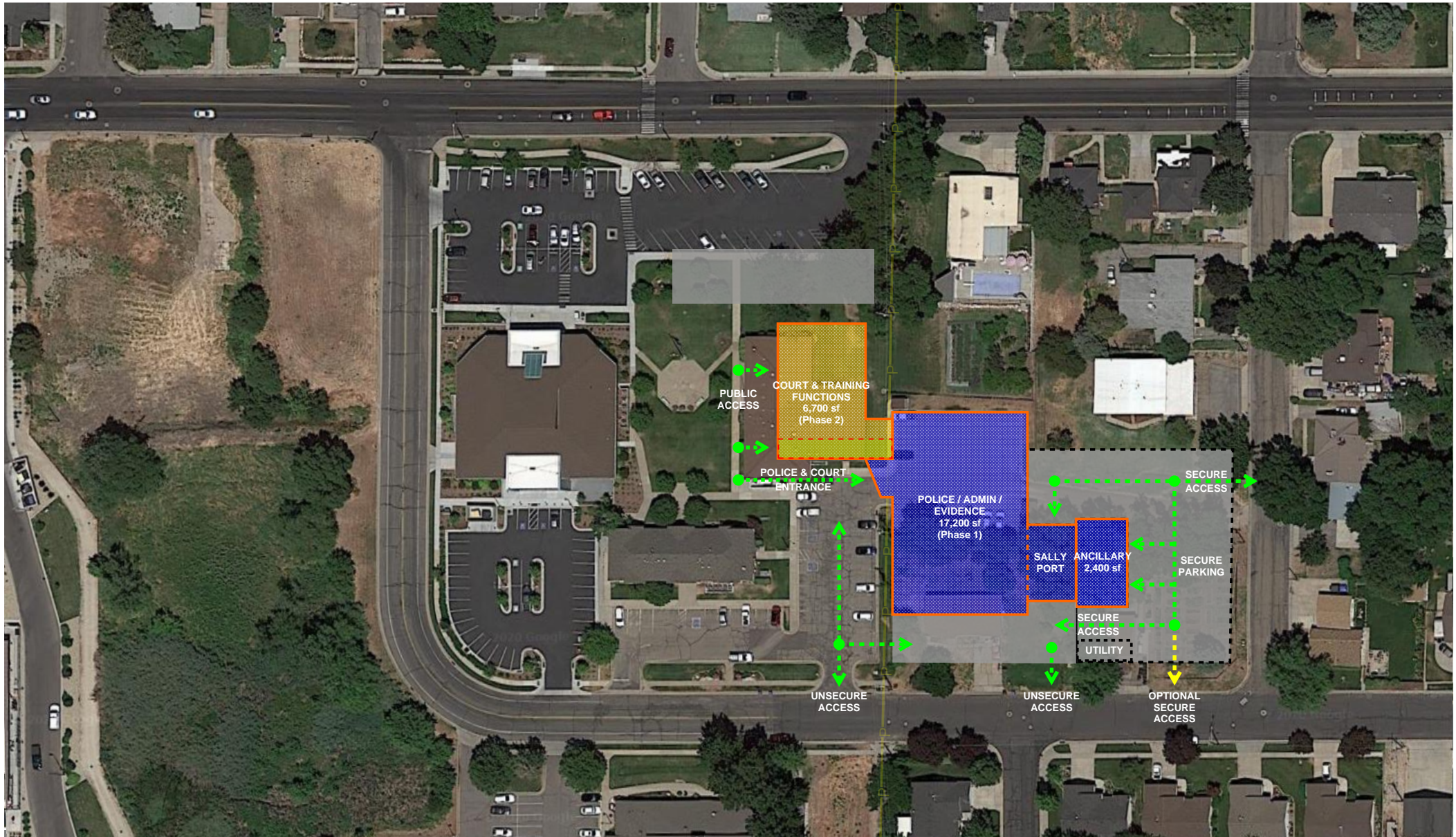
Appendix B

North Ogden Public Safety Building - Conceptual Site Plan

JRCA Architects | March 10, 2020 | Option B



ARCHITECTS



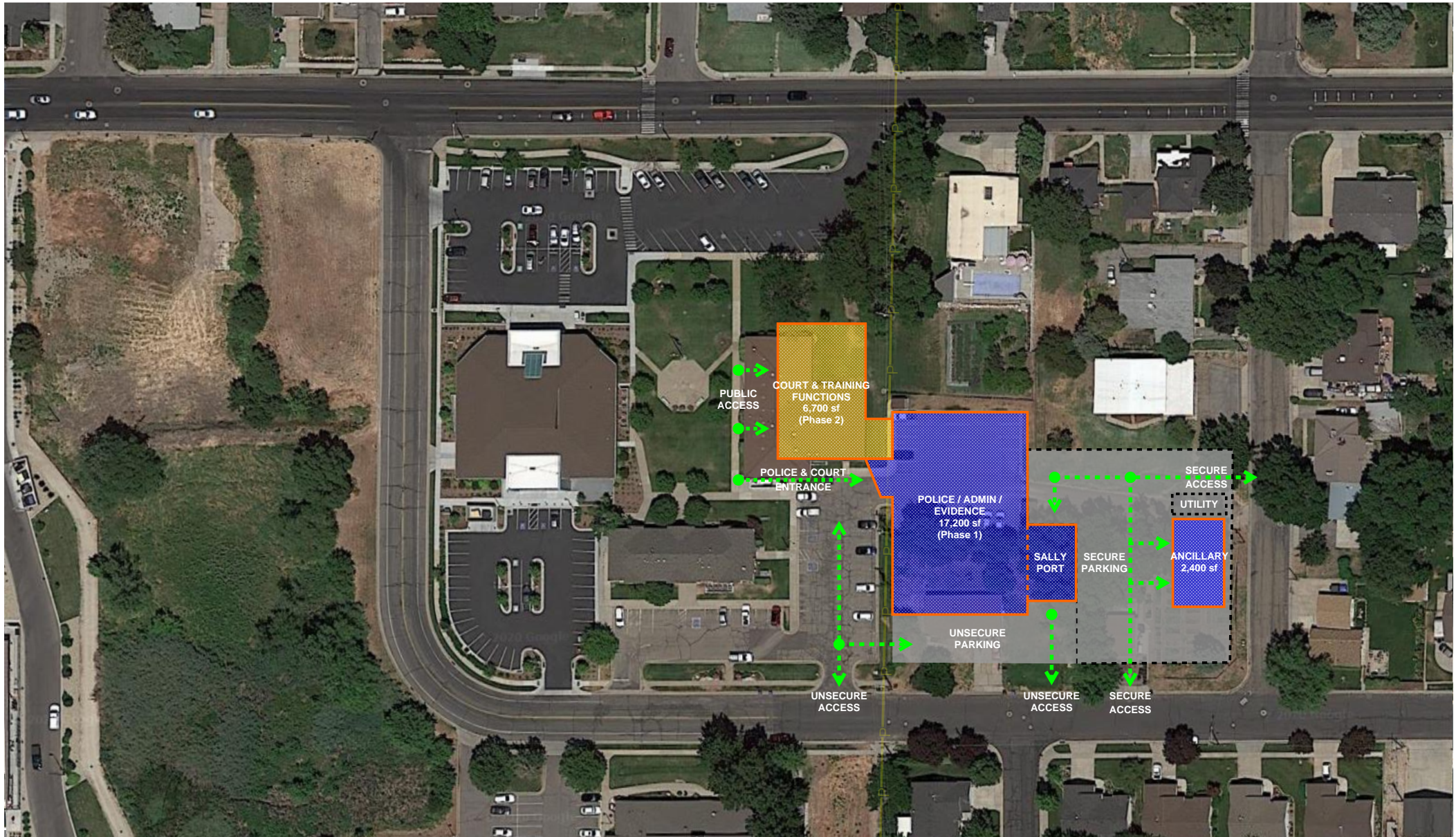
Appendix B

North Ogden Public Safety Building - Conceptual Site Plan

JRCA Architects | March 19, 2020 | Option C



ARCHITECTS



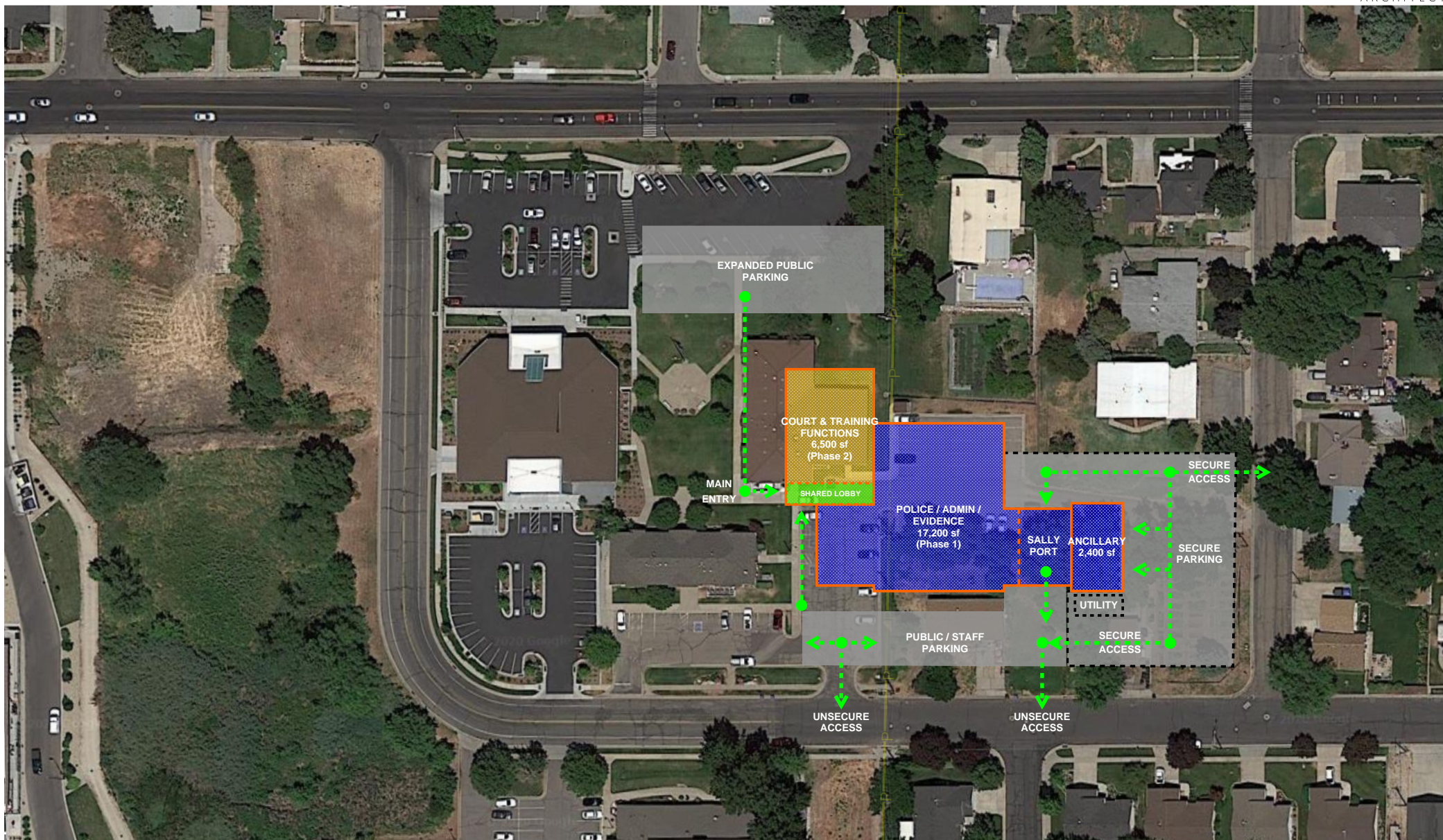
Appendix B

North Ogden Public Safety Building - Conceptual Site Plan

JRCA Architects | March 27, 2020 | Option D



ARCHITECTS



Appendix B