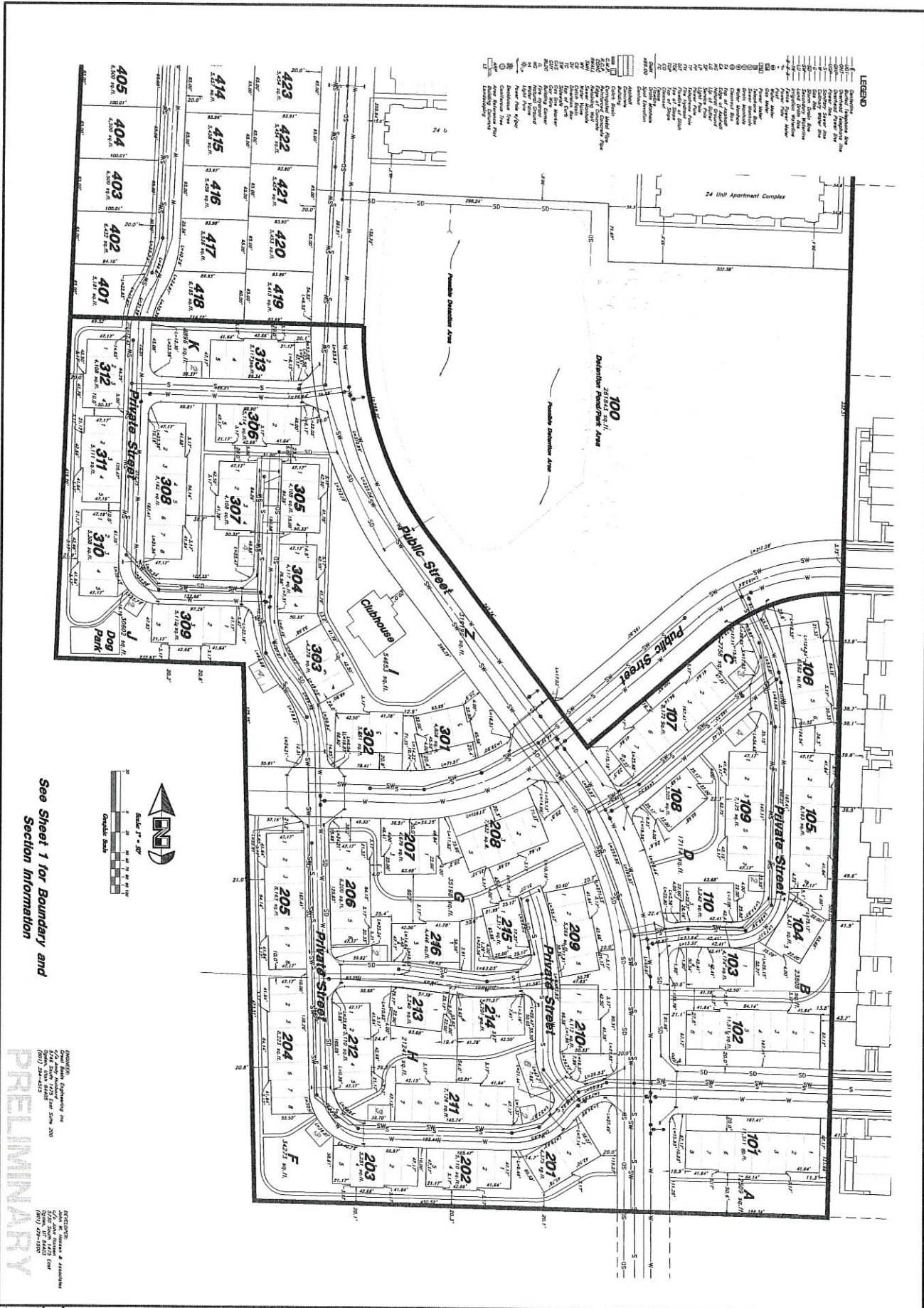


WORKSHEET: Patriot Pointe (2017) Plan - 10/11/17 10:53:30 AM, Page 11



See Sheet 1 for Boundary and Section Information

PRELIMINARY

Preliminary Plan
Patriot Pointe
 Approximately 130 East 2300 North
 North Ogden City, Weber County, Utah
 A part of Section 32, 17N, 11W, SLB&M, U.S. Survey

DATE: **28 Oct, 2019**
 SHEET NO: **2**

GREAT BASIN ENGINEERING
 5746 SOUTH 1475 EAST OGDEN, UTAH 84403
 MAIN: (801) 394-4411 FAX: (801) 392-7544
 WWW.GREATBASINENGINEERING.COM

REV	DATE	DESCRIPTION

